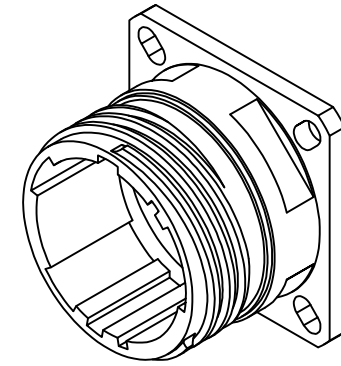
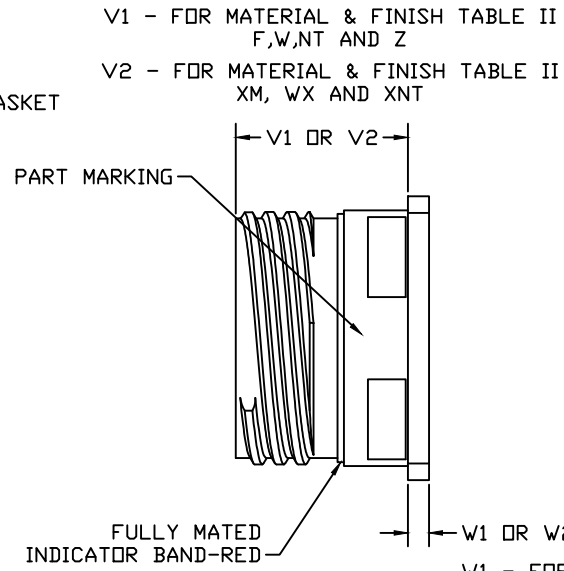
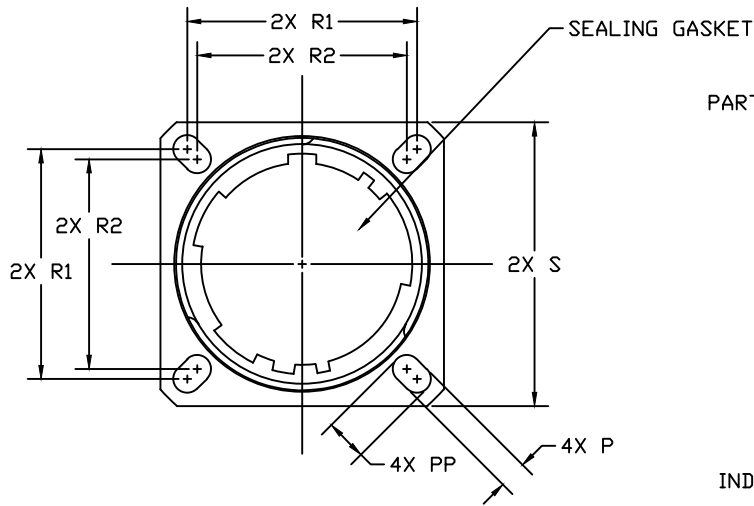


NOTES:

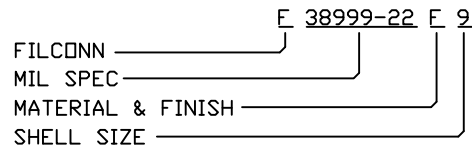
1. SEE TABLE I FOR SIZE & DIMENSIONS.
2. SEE TABLE II FOR MATERIAL & FINISH.
3. CONNECTORS SHALL CONFORM TO ALL INTERMATABILITY AND APPLICABLE PERFORMANCE REQUIREMENTS AS SET FORTH BY MIL-DTL-38999/22
4. DRAWING IS SUPPORTED BY ELECTRONIC SOLID MODEL, DRAWING IS NOT FULLY DIMENSIONED.

REVISION HISTORY			
REV	DESCRIPTION	DATE	APPROVED



- W1 - FOR MATERIAL & FINISH TABLE II
F, W, NT AND Z
- W2 - FOR MATERIAL & FINISH TABLE II
XM, WX AND XNT

PART NUMBER BREAKOUT:



DRAWN: D. DAVIS	DATE: 11/22/13	UNLESS OTHERWISE SPECIFIED DIMENSIONS ARE IN INCHES TOLERANCES ARE: DECIMALS ANGLES .XXX ± .003 ± 1° .XX ± .005 .X ± .010	CHANDLER FILConn ARIZONA			
CHECKED:	DATE:		MIL-DTL-38999/22 COMPLIANT DUMMY STOWAGE MASTER DRAWING			
QUALITY:	DATE:		FSCM: 3L5N9	DWG NUMBER: FILCONN-38999-22	SIZE A	REV A
APPROVED:	DATE:		SCALE: NTS	SHEET: 1	DATASET FILCONN-38999-22 SH01 A.DWG	PAGE 1 OF 2

TABLE I DUMMY STOWAGE DIMENSIONS										
SHELL SIZE	SHELL SIZE CODE	P ±.008	PP ±.008	R1 ±.005	R2 ±.005	S ±.010	V1 +.000 -.005	V2 +.055 -.000	W1 ±.010	W2
9	*A	.128	.216	.719	.594	.937	.820	.768	.098	.144/.087
9	*AA	.128	.216	.719	.594	.937	.820	.768	.098	.144/.087
11	B	.128	.194	.812	.719	1.031	.820	.768	.098	.144/.087
13	C	.128	.194	.906	.812	1.126	.820	.768	.098	.144/.087
15	D	.128	.173	.969	.906	1.220	.820	.768	.098	.144/.087
17	E	.128	.194	1.062	.969	1.311	.820	.768	.098	.144/.087
19	F	.128	.194	1.156	1.062	1.437	.820	.768	.098	.144/.087
21	G	.128	.194	1.250	1.156	1.563	.790	.736	.126	.177/.114
23	H	.154	.242	1.375	1.250	1.689	.790	.736	.126	.177/.114
25	J	.154	.242	1.500	1.375	1.811	.790	.736	.126	.171/.114

*A - SHELL SIZE CODE A IS FOR USE WITH SIZE 9 PLUG MATING KEY POLARIZATIONS C, E AND N, ONLY.

*AA - SHELL SIZE CODE AA IS FOR USE WITH SIZE 9 PLUG MATING KEY POLARIZATIONS A, B AND D, ONLY.

PART NUMBER BREAKOUT:

FILCONN _____ E 38999-22 E 9
MIL SPEC _____
MATERIAL & FINISH _____
SHELL SIZE _____

TABLE II MATERIAL & FINISH (ALUMINUM ALLOY UNLESS OTHERWISE NOTED)	
F	Electroless Nickel -85°F to +392°F(-65°C to -200°C)
W	Olive Drab Cadmium over Electroless Nickel plate, -85°F to +347°F(-65°C to +175°C)
NT	Nickel Teflon
Z	Yellow Cadmium over Electroless Nickel Plate.
XM	Electroless Nickel over Composite (ULTEM 2300)
XW	Olive Drab Cadmium over Electroless Nickel over Composite (ULTEM 2300)
XNT	Nickel Teflon over Composite (ULTEM 2300)

CHANDLER		FILConn		ARIZONA	
MIL-DTL-38999/22 COMPLIANT DUMMY STOWAGE MASTER DRAWING					
FSCM: 3L5N9	DWG NUMBER: FILCONN-38999-22	SIZE A	REV A		
SHEET: 1	DATASET FILCONN-38999-22 SH01 A.DWG	PAGE 2	OF	2	